



# Bases/Understructures

Flat and Irregular Shapes



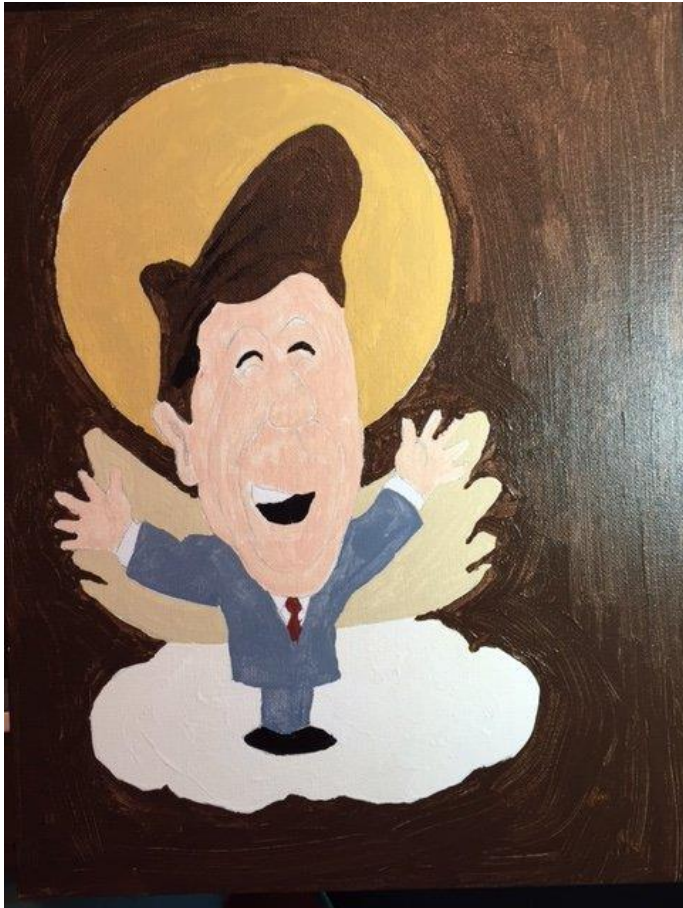
# Regular (flat) entries

- Can use pastelbord, artist canvas panels, Canson art boards, balsa wood, plywood, metal, heavy plastic, etc.
- Primarily important to have a firm, non-warpable surface
- If to be framed, best to buy a standard size panel or use something that can be cut to a standard size to avoid custom framing

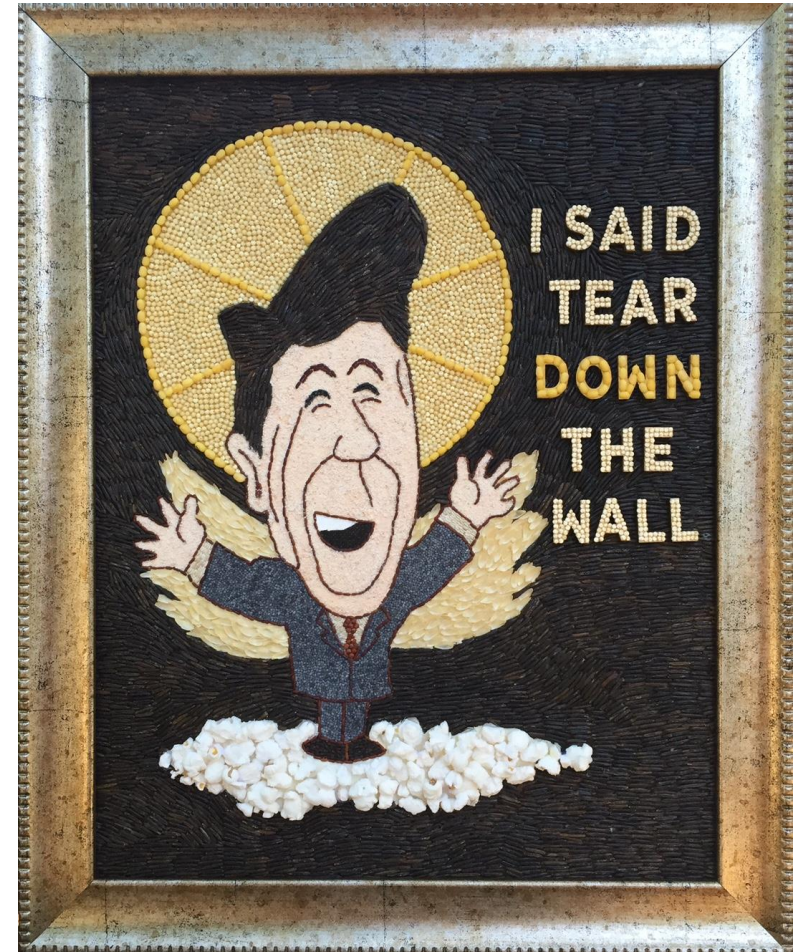


# Underpainting

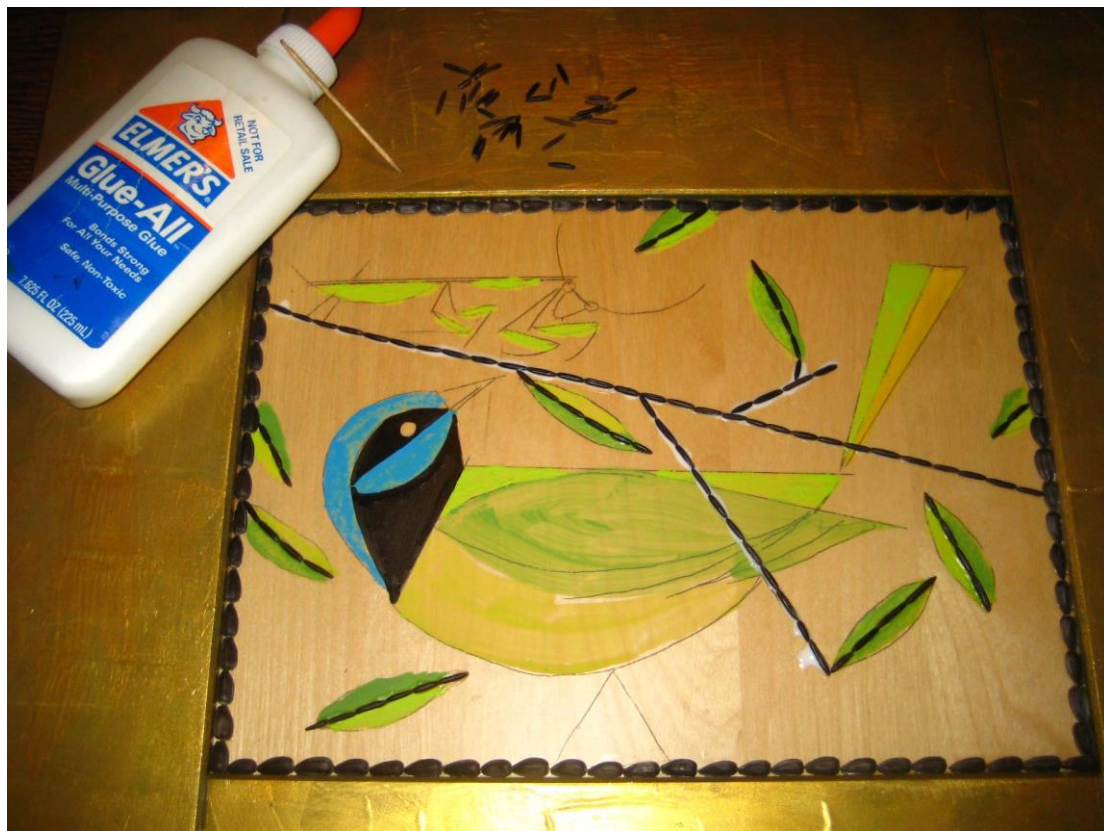
Depending on personal preference, you might choose to underpaint the surface to rough in the design and mask any bare spots between seeds



Teresa Anderson







Suzanne Mears



# Irregular shaped pieces

Balsa wood/plywood works well when glued together with Gorilla-type strong glue



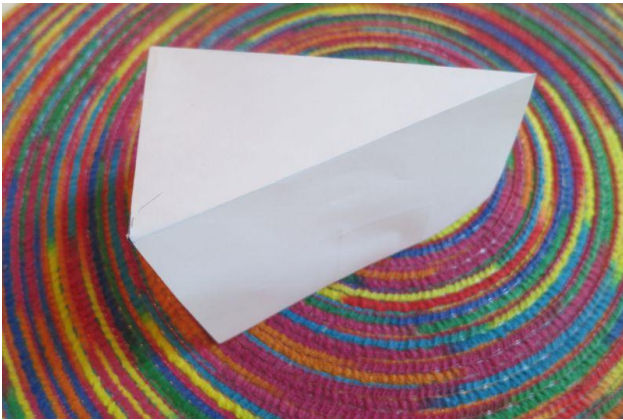
Backside of Small World facade



Teresa Anderson

# 3-D irregular shaped pieces

Again, Gorilla Glue is your friend for strong connections between pieces of wood



Paper model



Cut balsa wood



Finished piece

Teresa Anderson



# 3-D irregular shaped pieces cont...

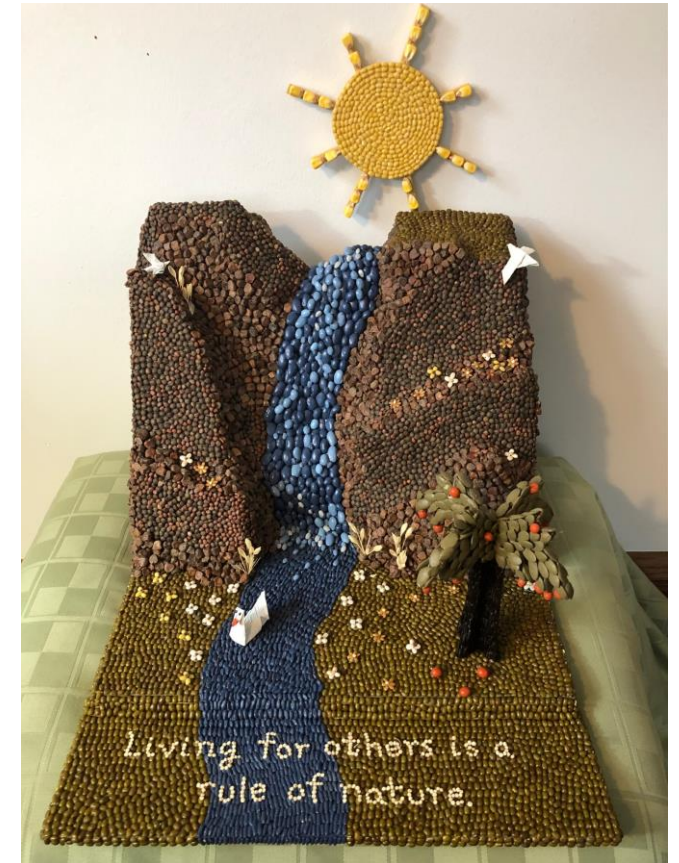
For a molded, rounded form, people have used paper mâché, plaster of Paris, and air-dried clay



Balsa wood base with Styrofoam filler



Plaster of Paris (strips soaked in water) to shape mountain



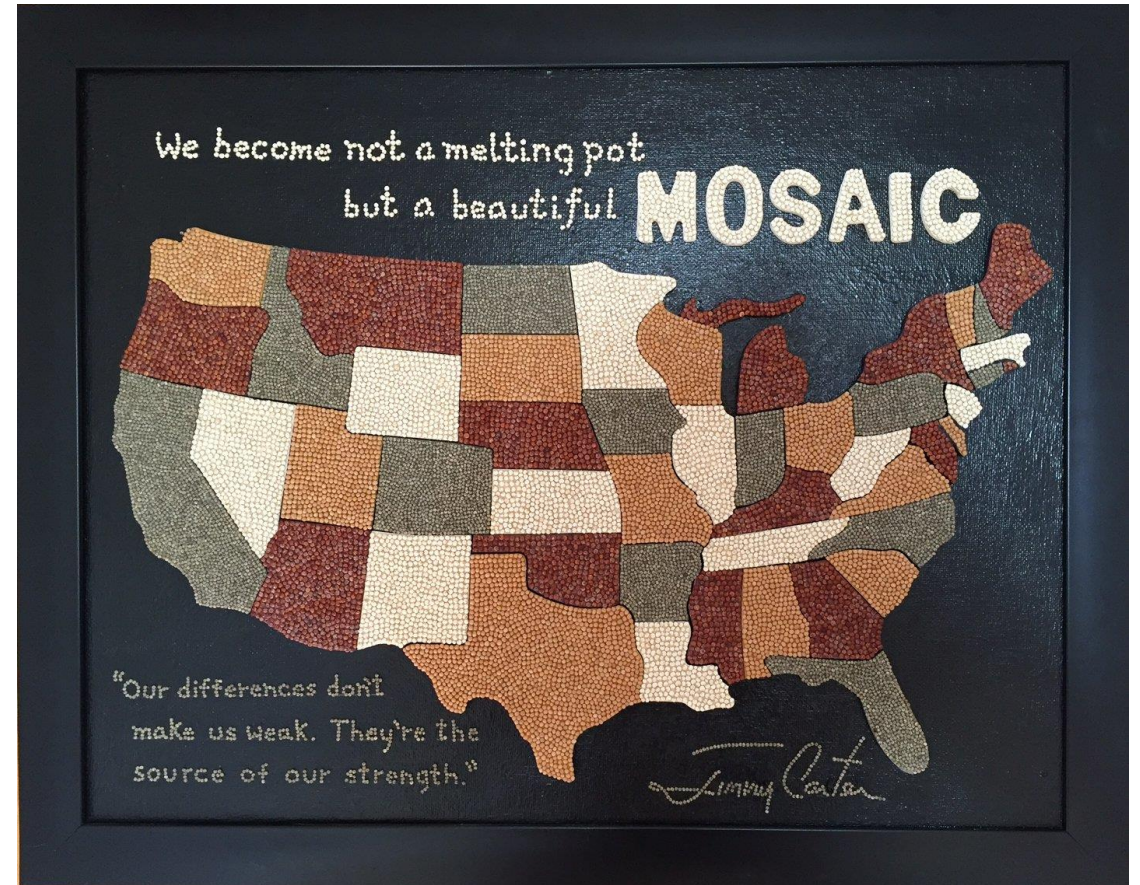
Teresa Anderson



Instead of tracing a design, sometimes you can find exactly what you need as a base!



Wooden puzzle



Teresa Anderson



# 3-D irregular shaped pieces cont...

Really, any non-porous, non-flexible item can be used as a base



Julie Blaha



Nicole Turek



Linda Paulsen





Liz Schreiber



Joe Klancher



Janine Joseph





Jill Moe



Annie Wu Mann



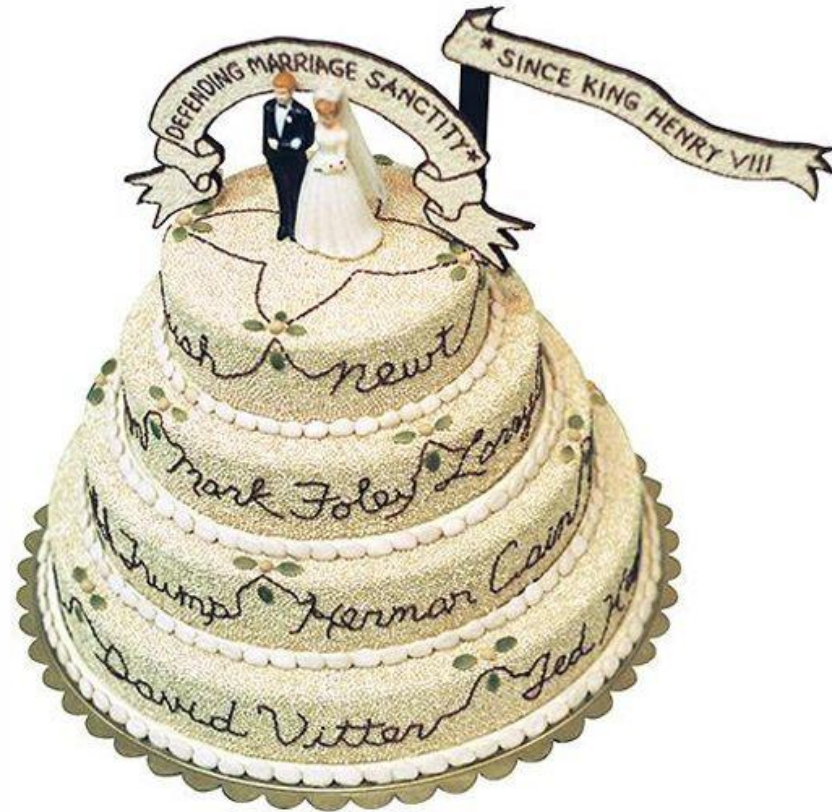


Christy Klancher

Turning a plastic big mouth billy bass into a seed crappie/croppie



Using actual wedding cake pans to make a wedding cake



Teresa Anderson



## Covering a decorative bird cage



Teresa Anderson





Teresa Anderson







Teresa Anderson





And sometimes, you might need to use an unusual base



Blue popcorn kernels hot glued to flexible, clear plastic to give the illusion of rain



Teresa Anderson

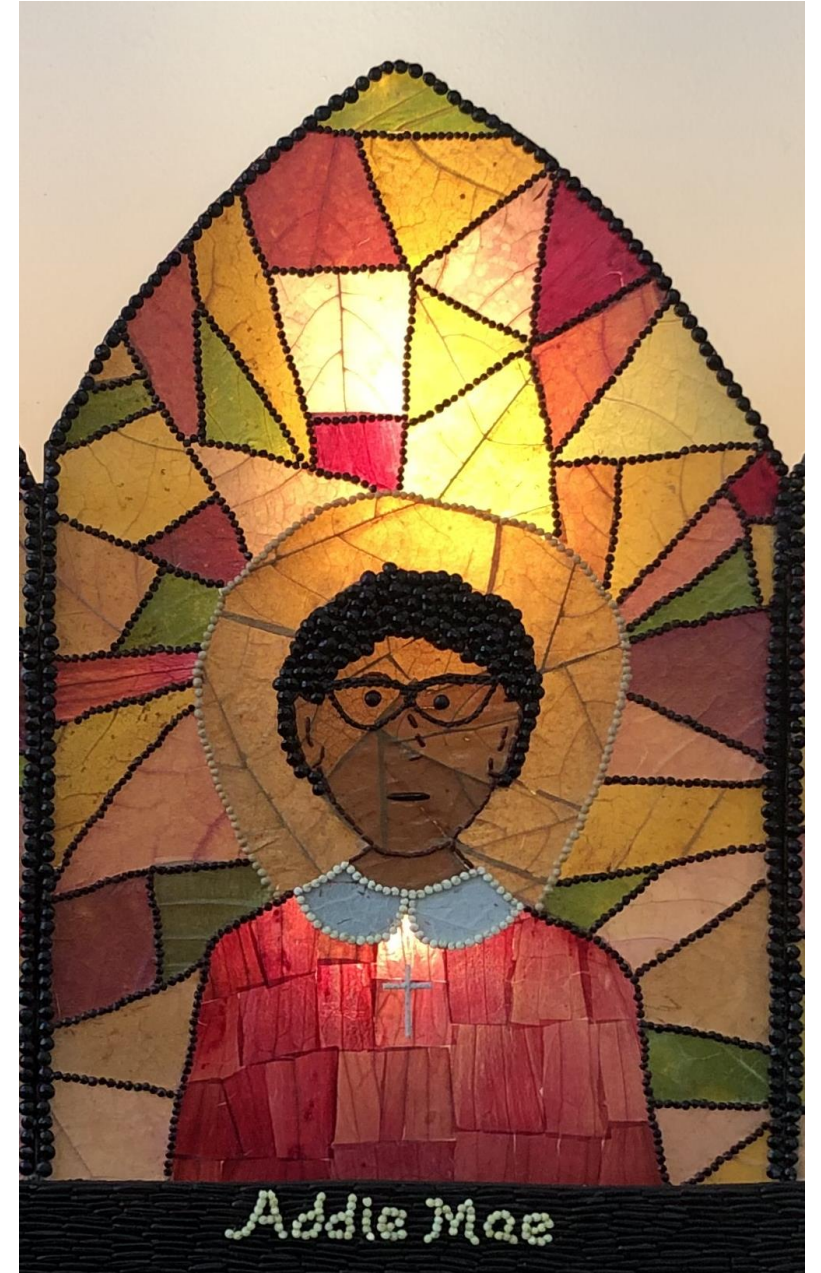


## Unusual bases, cont...



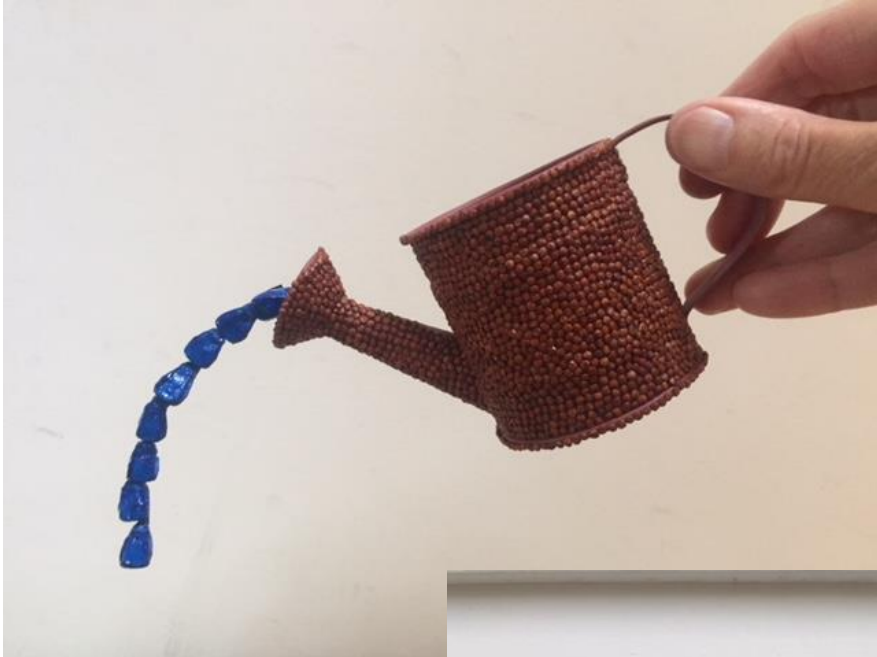
Basil glued to plastic to make a tiny pair of eyeglasses

Teresa Anderson





## Seeds glued to wire



Teresa Anderson



As you can see, there are many techniques and materials that can be used for the base of a crop art piece.

Feel free to email us with your ideas and photos!  
[cropart@cropart.com](mailto:cropart@cropart.com)